

Capabilities & Services



aglo™



Aglo is an Australian-owned lighting supplier, providing lighting solutions for the commercial and retail industries, bespoke luminaires and architectural features, and end-to-end project management services. Since 2004, we have grown to become a leading supplier of commercial and project lighting.

Our vision is to “continually improve our customers’ lighting experience,” through an optimal lighting design, high quality products and personalised service. We see our clients as our partner, and we work with them across all areas of the project development from sourcing, sampling, approval process, to purchasing, delivery and installation, and after project handover.

Aglo Systems Head Office.
Melbourne, Victoria

Our Services



Commercial Lighting Supply

As commercial lighting solution experts, our team can assist you with any project whether it be small and complex or large and dynamic, there is no limit to our capabilities.



Project Management

Providing quality lighting packages to suit architectural design and technical specifications, our project specialists ensure all requirements are met, with a strong focus on timely delivery and exceptional project management.



Custom Lighting Solutions

We produce bespoke light fittings for large developments including shopping centres, casinos, hotels, luxury apartments and public spaces.



Lighting Design

Our lighting design team create lighting concepts and solutions to achieve an exceptional lighting experience which is both energy efficient and compliant.



Photometrics Lab

The LabSpion Goniophotometer is a key investment initiative to ensure lights and products supplied are all correctly specified to their designed light output beam angle and light quality colour rendering index (CRI).



Bespoke Architectural Features

We create unique and complex architectural features, such as decorative wall screens, door handles and shades.



Certified Casambi Commissioning Partner

As one of Australia’s certified Casambi commissioning partners, we possess extensive expertise in commissioning Casambi smart lighting systems.

Aurora Towers
Melbourne, Victoria



Our vision is to “continually improve your lighting experience,” through an optimal lighting design, high-quality products, and personalised service.

Project Lighting

Aglo manages large-scale lighting solutions for offices, multi-residential developments, schools, hospitality venues, hotels, healthcare and aged care facilities.

Our experience allows us to source, handle and supply the best products for your project with guaranteed quality and innovative design, while keeping a strong focus on value management.

- Source and supply lighting packages to suit budget
- In-house R&D and strict quality control measures
- A global supplier network
- Assembly in Australia for shorter lead times and competitive pricing

Lighting specialists with a national presence.



Architecture is not just about the structure; it's also about the atmosphere it creates. Lighting plays a crucial role in enhancing the architectural design and creating a sense of drama.



University of Queensland
Andrew N. Liveris Building
Brisbane, Queensland



The Fifth Apartments
Melbourne, Victoria

JD Sports Melbourne Central
Melbourne, Victoria



**Make products
appear brighter
and more vibrant.**

Retail Lighting

Aglo has a proven track record working with many leading retailers, supermarkets, shopfitters, architects, designers, builders and electrical contractors.

As specialists in the retail industry, we understand the unique requirements in illuminating window displays, POS pieces, shelving, counters, gondolas and fitting rooms. We provide a seamless service from planning your lighting design and fitting specifications to delivery.

- Source and supply lighting packages to suit budget
- In-house R&D and strict quality control measures
- A global supplier network
- Assembly in Australia for shorter lead times and competitive pricing

Tugun Market Co.
Gold Coast, Queensland



Lighting Design

A well-lit site can make a vast impact on the overall user experience. It is not just about visual comfort but also how each area can be enhanced by lighting, to make it inspiring, emotive, or engaging. Well-planned lighting drives sales and improves OH&S. We can provide out-of-the-box concepts to achieve desired outcomes: from an even and balanced illumination across the site to using lighting for emphasis and decoration. We aim for optimum illumination for the lowest power consumption that meets the design brief and regulations.

Our highly experienced lighting designers, understand the process of developing lighting that provides the right level of light for both comfort and visual appeal. Creating the right lighting effects for your space to perfectly highlight interior elements and generate the best results for your project.

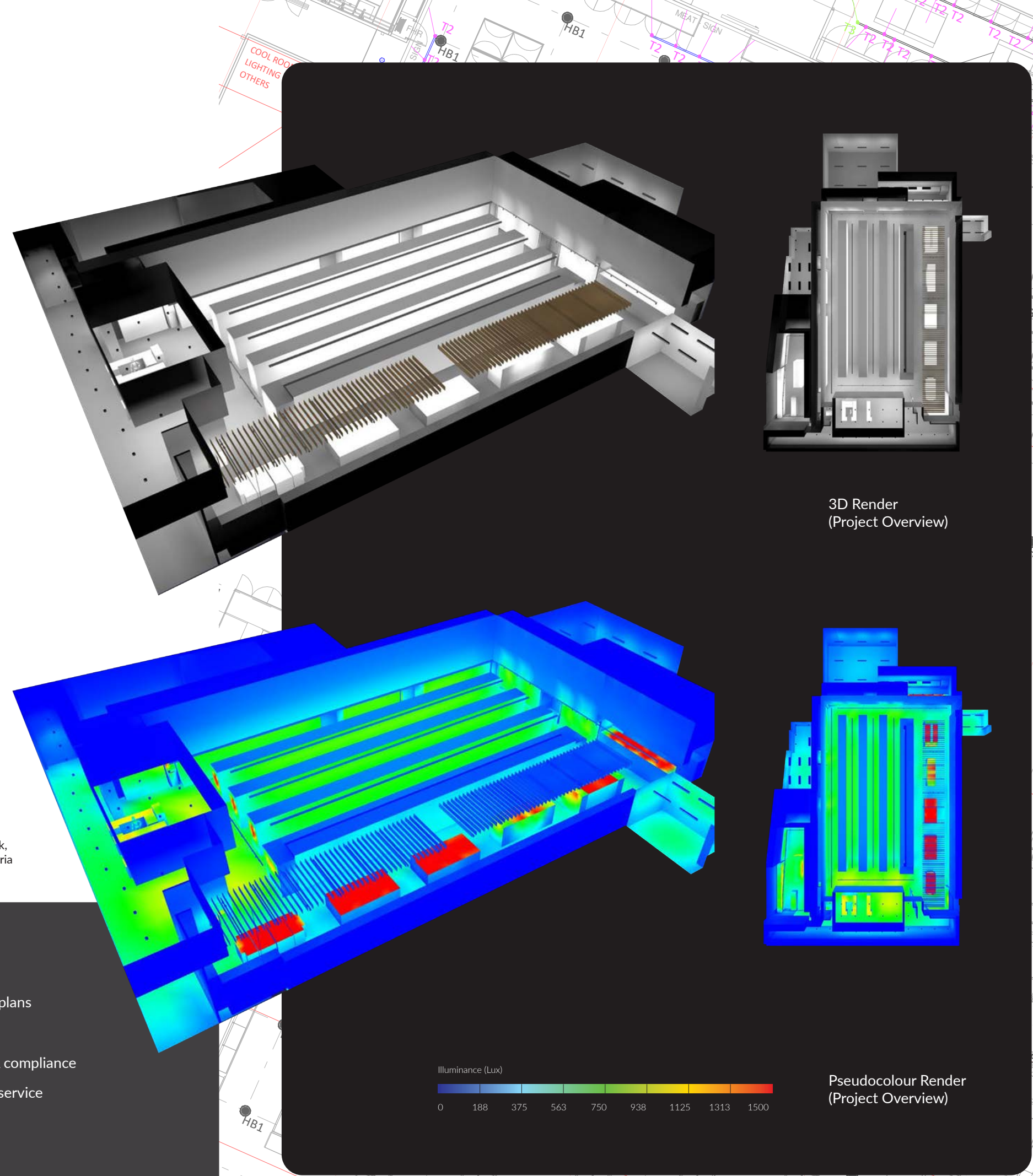
We take into account the structure of the building and its key features, along with Australian standard requirements and WELL/Greenstar standards.

3D renders and Pseudo colour renders help evaluate rendered spaces, giving an idea of the lighting distribution within the space. This is done by graduating them on an illuminance scale and representing them in different colours or grey tones, where white/red is the highest

IGA Thornhill Park,
Melbourne, Victoria

Create
contrast & a
comfortable,
inviting store.

- Lighting consultation
- Lighting design concepts & plans
- Luminaire specification
- Australian Standards & BCA compliance
- Luminaire aiming & angling service



Photometrics Lab

Luminaire testing and photometric data are often a core element of project submission, with photometric data demonstrating compliance being a key step in the approval and value-engineering process.

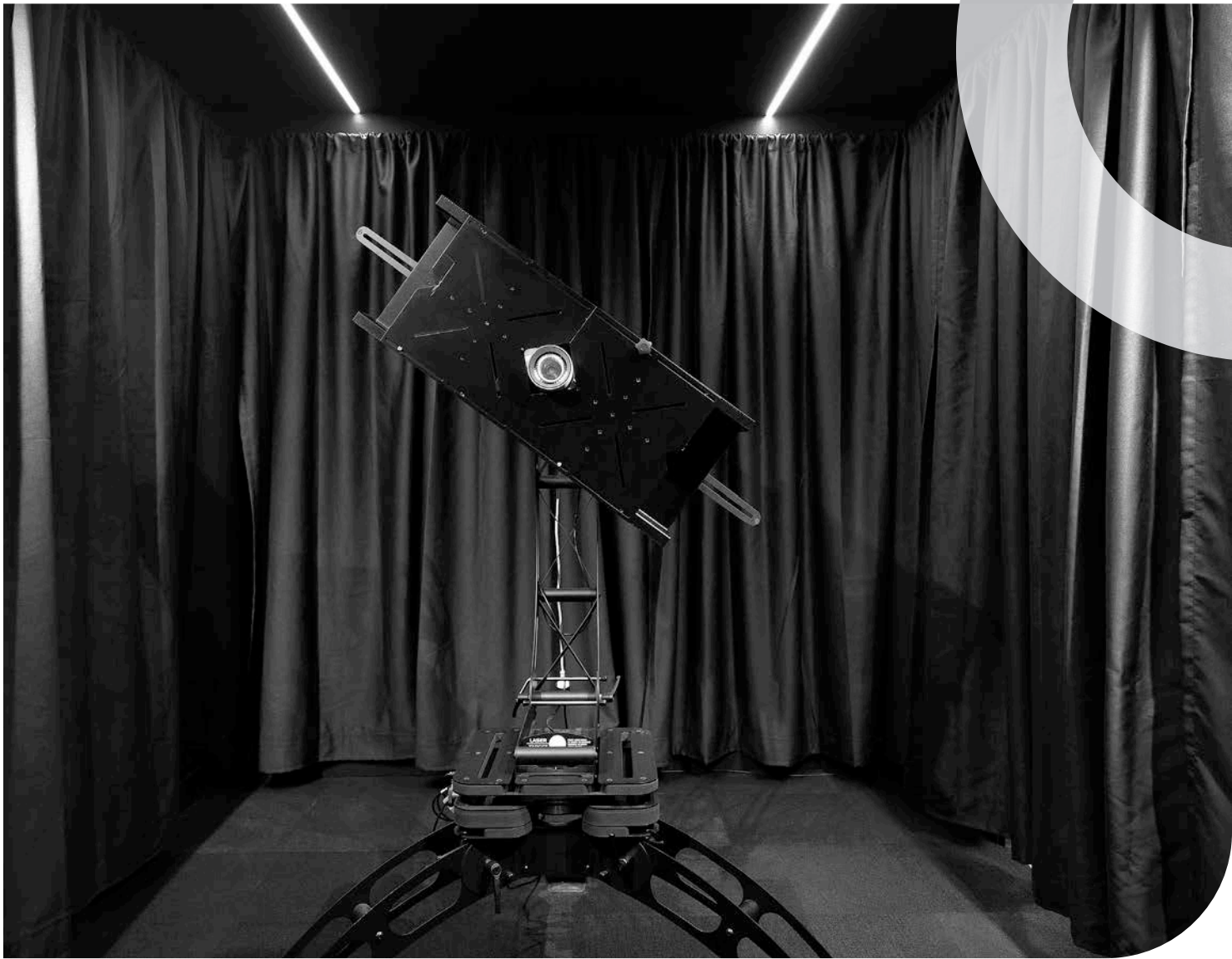
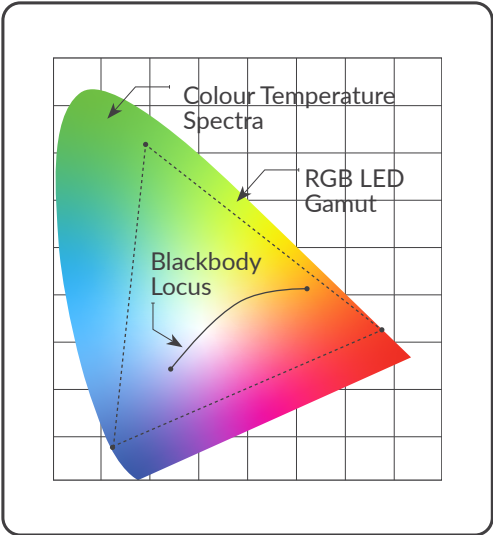
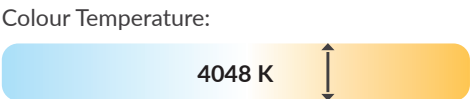
Aglo's Photometric Lab can measure virtually any type of lighting fixture quickly and easily to reduce delay and minimise dependence on external testing.

The LabSpion Goniophotometer is a key investment initiative to ensure lights and products supplied are all

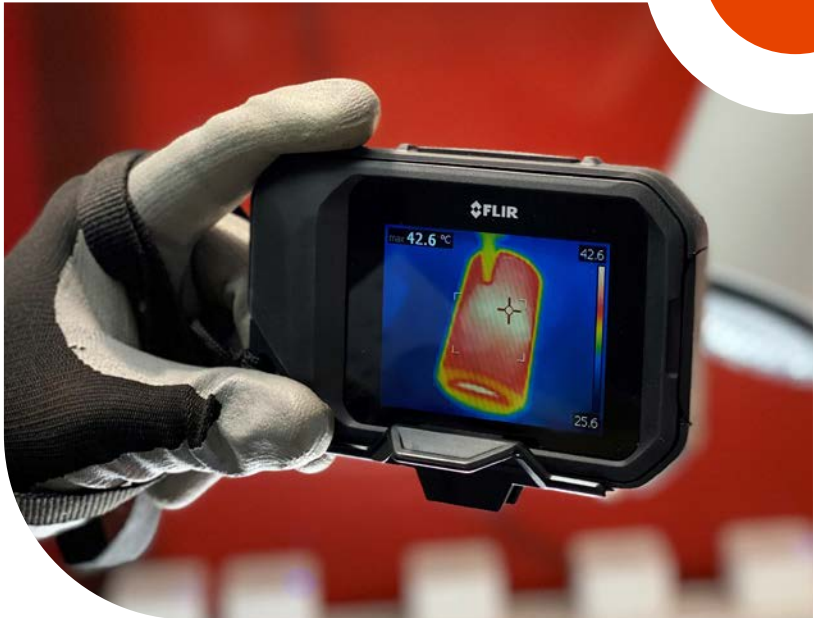
correctly specified to their designed light output beam and light quality colour rendering index (CRI). Incorrectly specified and manufactured lights are a resource waste, so too is not using the correct number of luminaires.

Aglo's environmental policy is to use fewer lights, correctly specified and QA tested. In the Aglo Photometrics lab, quality assurance (QA) includes conducting thermal and ageing tests to ensure consistent beam shape, colour intensity, and overall quality.

- Light measurement
- Thermal testing
- Ageing testing



Aglo Photometrics Lab
Head Office Melbourne



The LabSpion measures a luminaire's full 3D distribution field and provides a comprehensive fitting report. The files are uploaded in real time to a secure, cloud-based server and tracked, where data cannot be modified. This ensures measurement integrity for clients.

Custom Design & Manufacture

Aglo is a trusted and experienced partner for your custom design and manufacturing needs.

Lighting plays a pivotal role in setting the mood, enhancing ambiance, and creating memorable experiences. Custom lighting solutions offer the opportunity for personalisation, enabling you to shape the atmosphere of your space according to your preferences. Whether you're an architect, interior designer or business owner, custom lighting allows you to infuse your

unique personality into every nook and cranny.

Our portfolio of clientele ranges from boutique hospitality, apartment projects and exclusive resorts, to 6-star hotels and casinos. Our diverse local and global suppliers' network enables Aglo to deliver projects on any scale or budget.

Services Covered:

- Project management
- Concept development
- 3D CAD modelling design
- Photorealistic renders
- Prototyping
- Manufacture

Why Choose Aglo?

Detailed Shop Drawings

Aglo provides detailed shop drawings that ensure you have a clear understanding of what we'll be creating for you.

Innovative Problem Solvers

We help to resolve your idea into a manufacturable product that takes into consideration building weight limitations, budget constraints, installation limitations, etc.

Comprehensive Quotes

Others can quote with little information then charge variations to achieve what should have been delivered originally. We provide detailed quotes that address all costs required to maintain the designer's integrity and design intent.

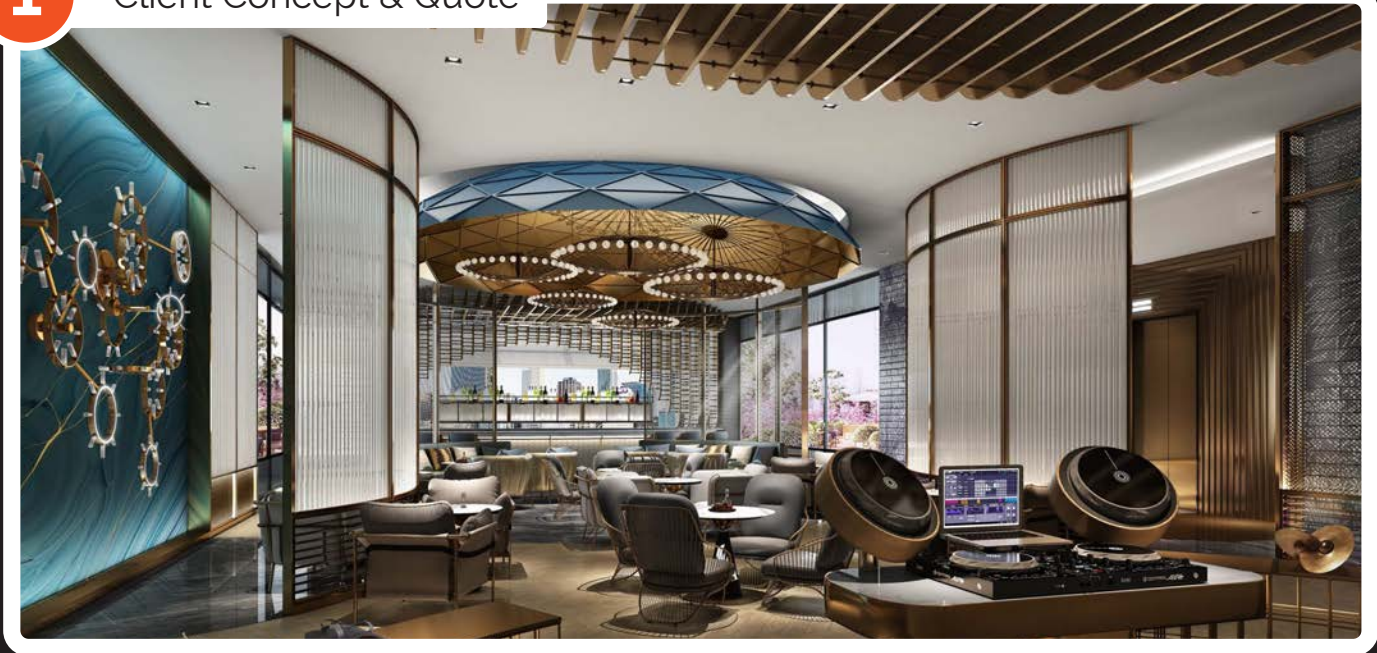


Lobby Feature Pendant with Electrolight, Cox Architecture & Fender Katsalidis
Queens Place Tower, Melbourne, Victoria

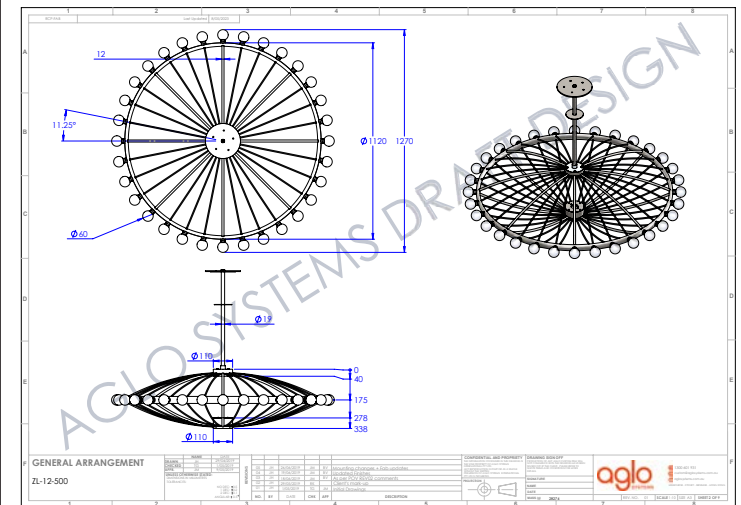
Our Design Process

Feature Pendants with FEC & FPOV
Songbird Bar & Lounge, The Ritz Carlton, Perth, Western Australia

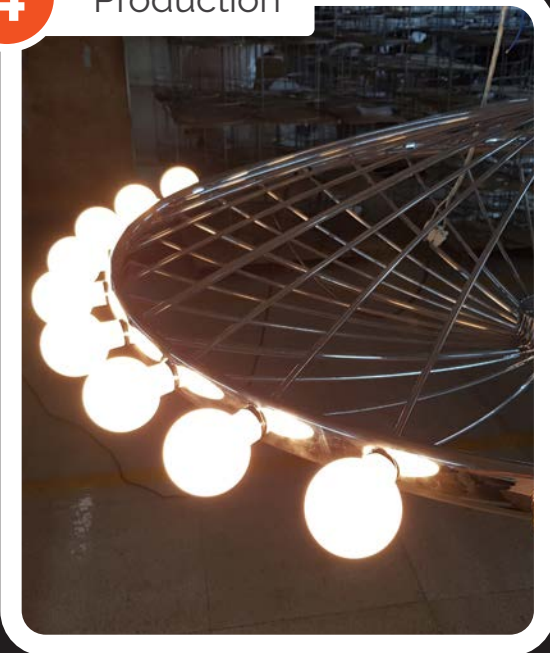
1 Client Concept & Quote



3 Shop Drawings



4 Production



2 3D CAD Design



5 Final Product





CASAMBI

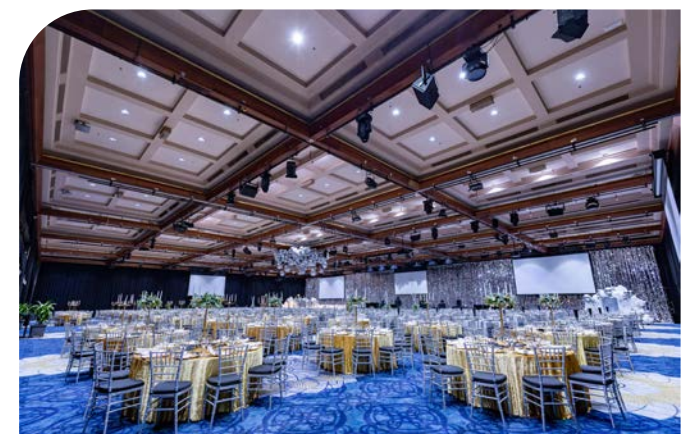
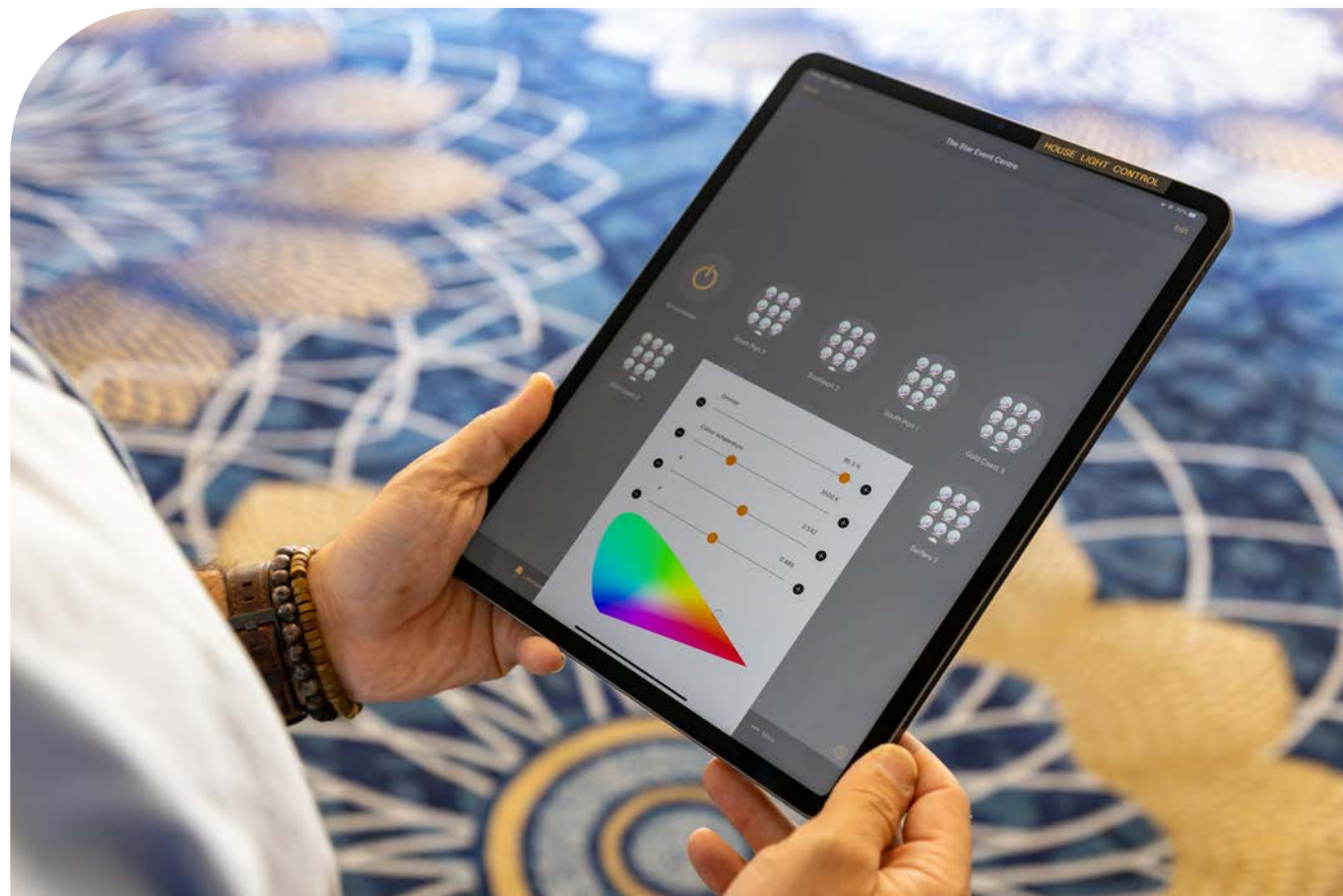
As one of Australia's certified Casambi commissioning partners, we possess extensive expertise in commissioning Casambi smart lighting systems. We will support you to help choose, install, and commission a customised mix of the latest Casambi smart lighting products to create the required functionality and best atmosphere for your design and space.

Consulting: If you're looking to integrate wireless control into your next project we can assist you every step of the way – from brief to ongoing technical support we'll work with you to deliver the best result for your project.

Supply and Integration: Our team can advise you about the latest Casambi products and technology whilst also completing the supply, setup and integration. We'll help to design your Casambi integration plan and will commission the entire ecosystem of Casambi products for you.

Training: Training is provided for all team members to ensure that your new smart lighting system is used to its fullest potential. We offer both one-on-one training and group demonstrations.

The Star Gold Coast Event Centre
Gold Coast, Queensland





Sustainability

Aglo embraces a holistic definition of sustainability, encompassing four key objectives: People, Energy, Planet, and Economy. Our aim is to achieve optimal environmental and social outcomes, while maintaining essential commercial viability. We are dedicated to continually improving your lighting experience whilst improving our contribution to a more sustainable future.

We aim to continually achieve and maintain these goals to attain transformational change within our business and have ongoing impact on upstream and downstream practises, using our own four pillars of sustainability.

People

We uphold ethical practices for the benefit of our employees, customers, and supply chain.

Energy

Our manufacturing facility is powered by 100% sustainable energy generated from solar power.

Planet

We prioritise energy efficiency and Green Star Design & As Built.

Economic

We manufacture high-quality products and provide economic advantages for our customers.

Our external signatories include:



FluoroCycle is a scheme to increase the recycling of lamps that contain mercury and reduce the amount of mercury entering the environment via landfill.



ExitCycle is a scheme to reduce the amount of cadmium and lead entering the environment from end-of-life emergency and exit lighting batteries, by continuously increasing the recycling of these batteries.



The IES is committed to the art and science of lighting, and the education of lighting professionals. As members we are committed to keeping up-to-date with standards and BCA codes.

Our Current Sustainability Initiatives:

- Investing in a two-stage office solar initiative which encompasses 92 panels of Q.PEAK Duo 425W/430W p each Huawei Inverter 29.9kW SUN-2000 series with a Smart Meter rooftop solar panels (total 188 panels).
- Strengthening our focus on local and responsible sourcing as part of our Sustainable Business Strategy.
- Enhancing waste management policies to ensure comprehensive recycling practices, including the use of 100% recycled paper products and partnering with a supply chain supplier that donates 50% of their profits towards clean sanitation development.
- Transitioning from traditional paper business cards to digital alternatives for contact information exchange with clients.
- Implementing standardised warehouse practices to minimise paper use, utilise recycled materials for packaging, and replace soft plastic packaging with recycled cardboard sourced internally.
- We are proud to be an inclusive workplace that welcomes staff from a diverse range of societies and backgrounds. We have recently implemented a 9-day work fortnight trial: aiming to promote balance and embrace flexibility to benefit employees and clients.
- Our Modern Slavery Policy ensures that our business and entire supply chain adhere to human rights and is against child and forced labour.
- Supporting the Overseas Qualified Professional Program, facilitating the integration of skilled migrant professionals into Australian workplace culture.
- Sponsoring the Asylum Seekers Resource Centre with lighting supply for their Integrated Service Hub, which serves individuals seeking asylum in Melbourne's south east.
- Our lighting design initiatives encompass adherence to The Australian Building Code – Section J6 to ensure our design comply with energy usage requirements. We consistently work with architects and external lighting designers to commit to the Green Building Council of Australia's Green Star ratings, and we regularly review our policies and procedures to keep with the latest regulations in this sector.
- Our product and packaging initiatives include incorporating recycled and recyclable materials and putting increased pressure on our suppliers to do the same, to reduce the environmental and economic impact of waste.
- We assemble a large component of our products locally, reducing the scale and frequency of international shipments, employing local people, and diversifying our product range. Our products are designed with maximum efficiency in mind (more light: less power), with longer lamp life.
- 'Cycle of Light' Initiative: Much of our product range is refurbishable – our luminaries can increasingly become serviceable, with the working parts such as drivers and LED's being replaced instead of replacing the whole product.
- We have developed the Mondolux High Efficacy Series which reduces energy consumption and costs, and features advanced technology and state-of-the-art engineering, providing unrivalled efficiency, longevity and versatility.

Aglo Manufacturing Facility
Melbourne, Victoria



Aglo Manufacturing Facility
Melbourne, Victoria



Product:
Bron Fixed

Our Brands

MONDOLUX™

Mondolux is an innovative lighting brand developed by Aglo with a strong reputation for quality and technical performance. Through decades of combined work in the lighting industry, we understand the needs of the market and identified a gap in the current offering of lighting companies.

We know the challenges in specifying high-performance LED luminaires and have developed a comprehensive product range specifically suited to commercial and project applications. All products are thoroughly tested, warranted and certified to meet Australian, New Zealand and European compliance standards.

The Mondolux website features extensive technical information for ease of access, including downloadable resources, a product configurator and an illuminance calculator to make sourcing the perfect lighting solution simple.

We continue to invest in research and development, to ensure our products are best in market and include the latest in technological advancements.



Downlights



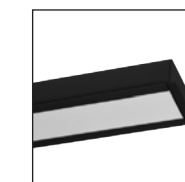
Spotlights &
Tracklights



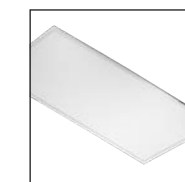
Track



Low Voltage
Track System



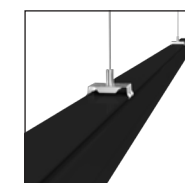
Linear LED
& Extrusions



Battens, Panels
& Troffers



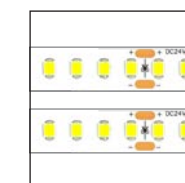
Pendants



Trunking
Systems



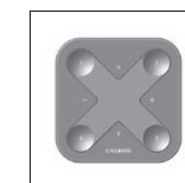
Flood Lights &
High Bays



LED Strips &
Bendable Neons



Outdoor &
Exterior



Casambi

nuudo.

Lumiparts





IRIS

An inspiring collection of timeless pieces from emerging and established Australian designers.

Crafted, modern, unique and built to last.

A celebration in sophistication, this is our first collection, designed by Tegan Gardner.

A combination of shapes and finishes to create a more complex yet sophisticated form.





aglosystems.com.au

Melbourne Head Office

10 Plane Tree Ave
Dingley Village, VIC 3172
1300 601 931
sales@aglosystems.com.au

Queensland Office

Unit 6 / 94 Township Drive
Burleigh Heads, QLD 4220
07 5594 6968
sales.qld@aglosystems.com.au

Aglo distributes Mondolux Lighting

MONDOLUXTM

mondolux.com.au

