

# Supermarket Lighting Solutions



aglo™





Aglo is an Australian-owned lighting supplier, providing lighting solutions for the commercial and retail industries, bespoke luminaires and architectural features, and end-to-end project management services. Since 2004, we have grown to become a leading supplier of commercial and project lighting.

Our vision is to “continually improve our customers’ lighting experience,” through an optimal lighting design, high quality products and personalised service. We see our clients as our partner, and we work with them across all areas of the project development from sourcing, sampling, approval process, to purchasing, delivery and installation, and after project handover.

Aglo Systems Head Office.  
Melbourne, Victoria

## Our Services



### Commercial Lighting Supply

As commercial lighting solution experts, our team can assist you with any project whether it be small and complex or large and dynamic, there is no limit to our capabilities.



### Project Management

Providing quality lighting packages to suit architectural design and technical specifications, our project specialists ensure all requirements are met, with a strong focus on timely delivery and exceptional project management.



### Custom Lighting Solutions

We produce bespoke light fittings for large developments including shopping centres, casinos, hotels, luxury apartments and public spaces.



### Lighting Design

Our lighting design team create lighting concepts and solutions to achieve an exceptional lighting experience which is both energy efficient and compliant.



### Photometrics Lab

The LabSpion Goniophotometer is a key investment initiative to ensure lights and products supplied are all correctly specified to their designed light output beam angle and light quality colour rendering index (CRI).



### Bespoke Architectural Features

We create unique and complex architectural features, such as decorative wall screens, door handles and shades.



### Certified Casambi Commissioning Partner

As one of Australia’s certified Casambi commissioning partners, we possess extensive expertise in commissioning Casambi smart lighting systems.



IGA Burpengary  
Burpengary, Queensland

# CHEESEMONGER



**Our vision is to “continually improve your lighting experience,” through an optimal lighting design, high-quality products, and personalised service.**



# Supermarket Lighting Specialists

Aglo has a proven track record of collaborating with numerous prominent supermarkets, shopfitters, architects, designers, builders, and electrical contractors.

The first step in achieving the perfect lighting for your supermarket is to understand the space. Different areas of the supermarket require different lighting setups, depending on the products on display, the height of the ceilings, and the amount of natural light that enters the space. As experienced specialists in the supermarket industry, we understand the unique requirements in illuminating the fresh produce, aisle, point of sale, delicatessen, storage/food preparation, liquor, back-of-house, and entrance areas. We provide a seamless service, from planning your lighting design and fitting specifications, through to delivery and handover.

- **Strong partnerships with retailers, shopfitters, and procurement partners**
- **Short product lead time**

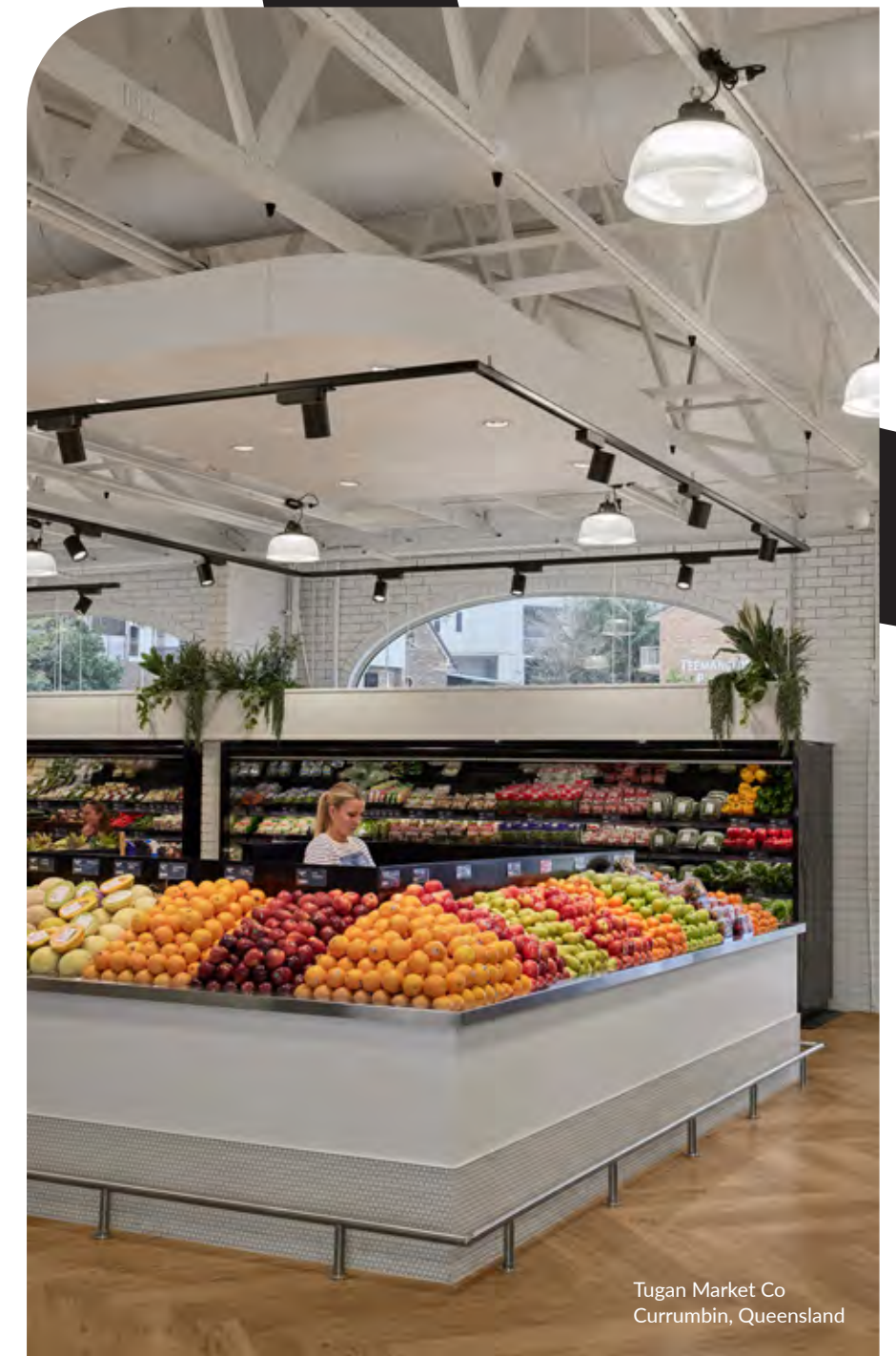
Tugan Market Co  
Currumbin, Queensland

## Supermarket lighting specialists with a national presence.





Lighting plays a key role in supermarket design where a great lighting environment can attract and guide the flow of people.



Tugan Market Co  
Currumbin, Queensland



IGA Burpengary  
Burpengary, Queensland

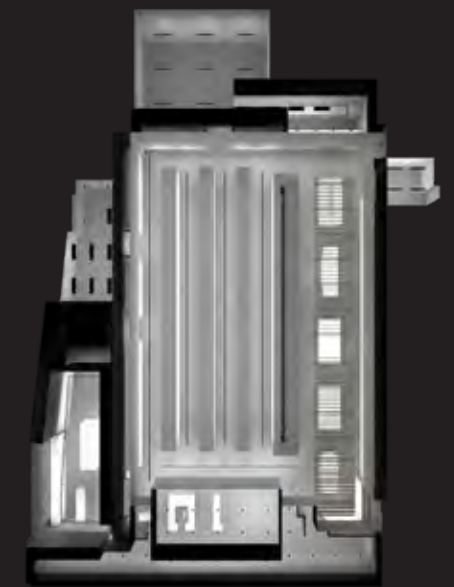
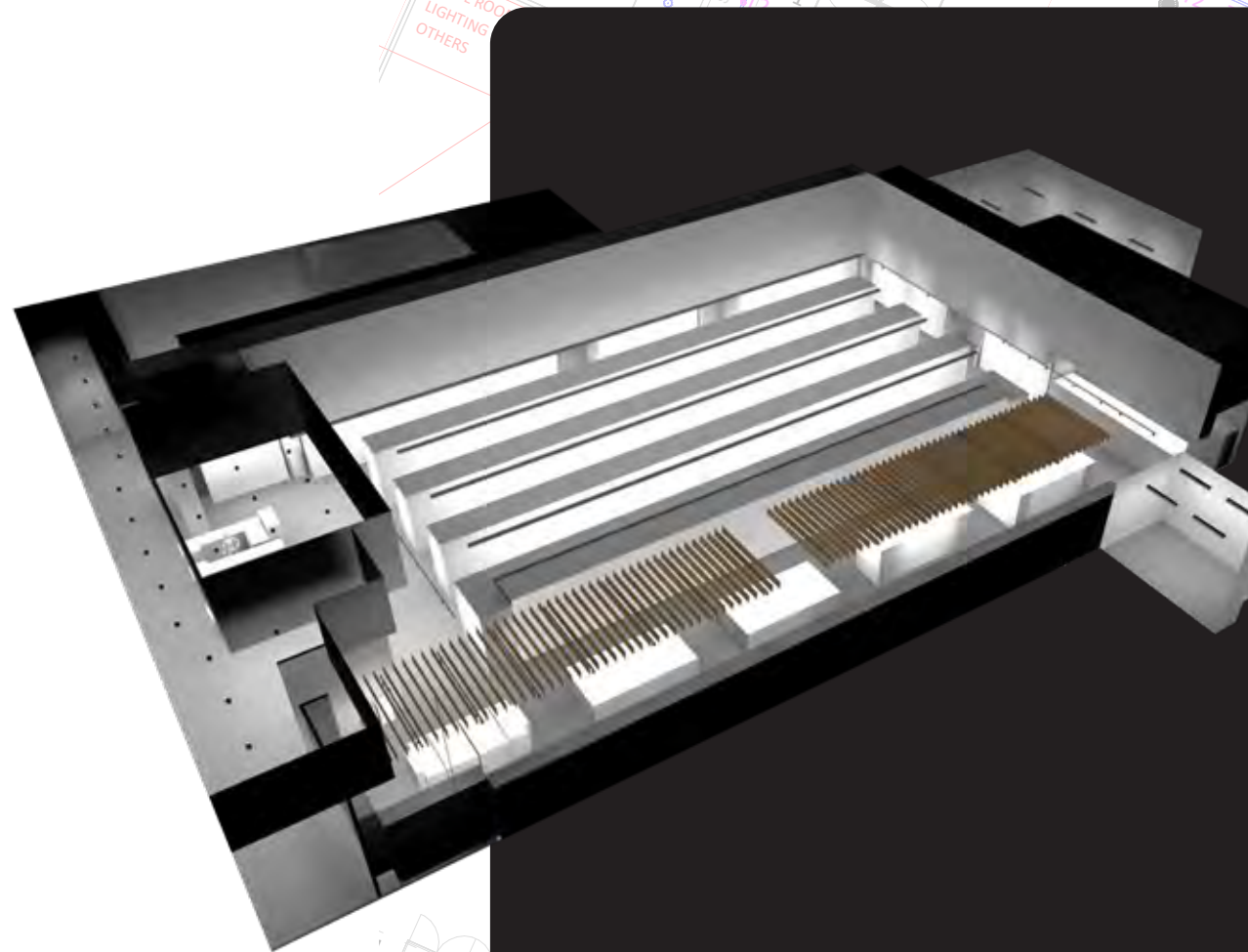


# Lighting Design

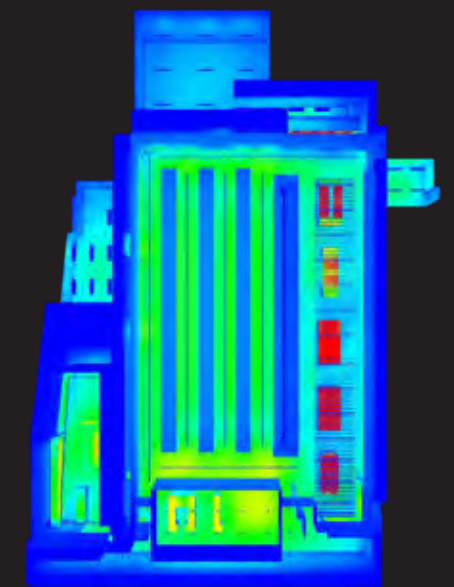
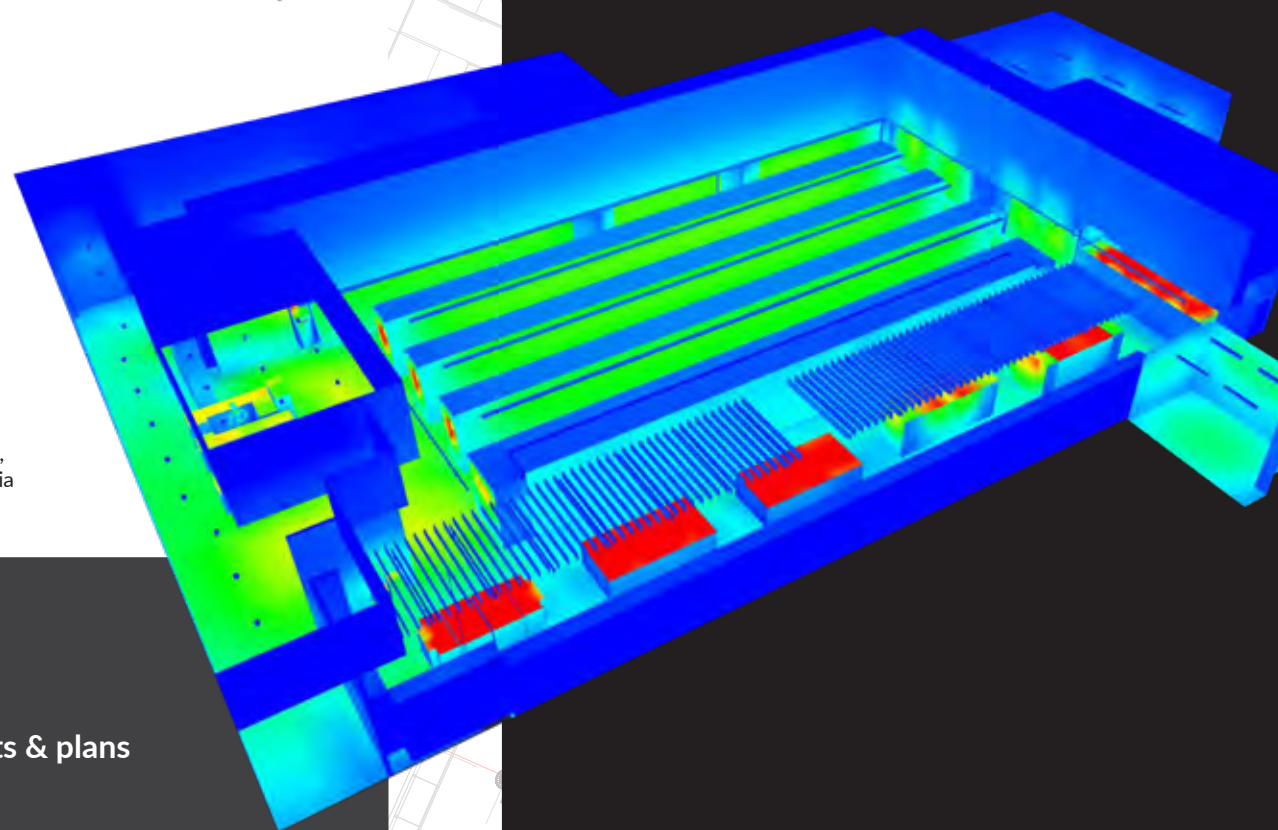
A well-lit supermarket can make a vast impact on the overall user experience. It is not just about visual comfort but also how each area can be enhanced by lighting, to make it inspiring, emotive, or engaging. Well-planned lighting drives sales and improves OH&S. We can provide out-of-the-box concepts to achieve desired outcomes: from an even and balanced illumination across the site to using lighting for emphasis and decoration. We aim for optimum illumination for the lowest power consumption that meets the design brief and regulations. We take into account the structure of the building and its key features, along with Australian standard requirements and WELL/Greenstar standards.

3D renders and Pseudo colour renders help evaluate rendered spaces, giving an idea of the lighting distribution within the space. This is done by graduating them on an illuminance scale and representing them in different colours or grey tones, where white/red is the highest illuminance level and dark grey/blue the lowest.

IGA Thornhill Park,  
Melbourne, Victoria



3D Render  
(Project Overview)



Pseudocolour Render  
(Project Overview)

- Lighting consultation
- Lighting design concepts & plans
- Luminaire specification
- Australian Standards & BCA compliance
- Luminaire aiming & angling service

Drive  
sales &  
improve  
OH&S.







Product:  
Bron Fixed

# | Our Brands

## MONDOLUX™

MondoLux is an innovative lighting brand developed by Aglo with a strong reputation for quality and technical performance. Through decades of combined work in the lighting industry, we understand the needs of the market and identified a gap in the current offering of lighting companies.

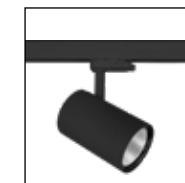
We know the challenges in specifying high-performance LED luminaires and have developed a comprehensive product range specifically suited to commercial and project applications. All products are thoroughly tested, warranted and certified to meet Australian, New Zealand and European compliance standards.

The Mondolux website features extensive technical information for ease of access, including downloadable resources, a product configurator and an illuminance calculator to make sourcing the perfect lighting solution simple.

We continue to invest in research and development, to ensure our products are best in market and include the latest in technological advancements.



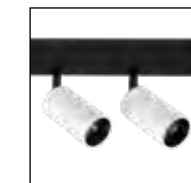
Downlights



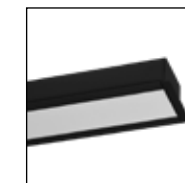
Spotlights & Tracklights



Track



48V Track System



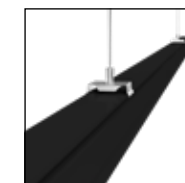
Linear LED & Extrusions



Battens, Panels & Troffers



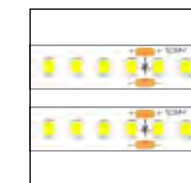
Pendants



Trunking Systems



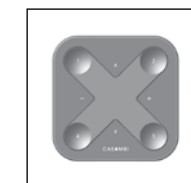
Flood Lights & High Bays



LED Strips & Bendable Neons



Outdoor & Exterior



Casambi





## Introducing HE Series by Mondolux

Designed to deliver class-leading performance while reducing energy consumption and costs, the HE Series features advanced technology and state-of-the-art engineering, providing unrivalled efficiency, longevity, and versatility.

The HE Series has been carefully crafted to deliver superior luminous efficacy, with lumens per watt ratios far exceeding those of standard lighting products. This means that the HE Series provides higher light levels while consuming significantly less energy, resulting in reduced energy bills, and a lower carbon footprint. By generating less heat in comparison to other

# MONDOLUX™

luminaires with comparable lumen output, the HE series reduces the HVAC load, which helps to lower energy consumption even further.

The HE Series incorporates Downlights, Spotlights, Tracklights, Linear LED Strips, Trunking and High Bays. Each product has been optimised for maximum energy efficiency and performance, with features such as photometric excellence: CQS 90 and TM-30 90, CRI90 with impressive colour consistency of 2-Step MacAdam Ellipse and improved life expectancy due to reduced drive current with lumen maintenance (L70) >64,000 hours\*.

\*Based on HE Spotlight and Downlight products

	Quantity	System Power	Luminous Efficacy (lm/W)	Total Lumen per luminaire	Total kW	kWh (p.a.)
Standard Product	112	30W	80lm/W	2,402lm	3.5kW	12,288kWh Based on 10 hrs of operation per day
<b>Mondolux HE Series</b>	<b>95</b>	<b>22W</b>	<b>150lm/W</b>	<b>2,402lm</b>	<b>2.2kW</b>	<b>8,019kWh</b> <b>Based on 10 hrs of operation per day</b>

\*This reflects an average liquor store across the Mondolux HE range. Greater savings may apply, example only.

When compared to the above example, the Mondolux HE Series generates:



\$2,134.50 cost savings  
from power reduction  
(at 0.25 per kWh Tariff p.a)



9.13t decrease of  
CO2 emissions  
(tCO2e) (p.a)



The equivalent of  
736,025 smartphones  
charged



Saving 3,384.798kg  
of coal burned



98 Eucalyptus tree  
seedlings grown  
for 14 years (p.a)



8,538 kWh (p.a)  
total power saving



IGA Woodend  
Woodend, Victoria



**Make products  
appear brighter  
and more vibrant.**

## Aisle Lighting

The best lighting design for aisle lighting in supermarkets is one that provides bright and uniform lighting, highlights specific products or areas, and reduces shadows and glare. To achieve this, a combination of different lighting fixtures and techniques can be used.

It is important to consider the colour temperature of the lighting used in aisle lighting. A warm white colour temperature (around 2700K-3000K) is ideal for creating a welcoming and comfortable atmosphere, while a cooler white colour temperature (around 4000K-5000K) can make products appear brighter and more vibrant. A combination of both warm and cool white colour temperatures can be used to create contrast and depth in the lighting design.

The placement of the lighting fixtures is another important factor to consider within the lighting design for aisle lighting. The fixtures should be placed in a way that reduces shadows and glare, and ensures that the entire aisle is evenly lit. The height of the fixtures should also be considered, as fixtures that are too low can create glare and fixtures that are too high can create shadows.

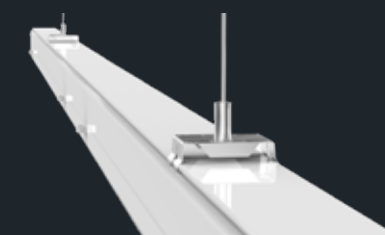
Effective Aisle Lighting  
Product Options:

**MONDO LUX™**



**| Hartley HE**

A highly efficient spotlight that leads the way in sustainable lighting. Delivering class-leading system efficacy 160lm/W\* and premium light quality. This compact spotlight uses specially designed laser-cut reflectors, an integral driver and leading innovation, high efficiency COB LED, Hartley HE is considered and minimal. The head has a rotation angle up to 350°, which can illuminate aisles beautifully. An ideal, economical supermarket solution. \*Tested at 19W & 4000K with a spot beam angle.



**| Mons-C**

Featuring a double asymmetric lens, is an excellent choice for aisle lighting. This lighting solution is easy to install and maintain, resulting in lower installation costs. Additionally, the system creates the perfect effect on aisle stock from top to bottom, ensuring effective illumination.



**| Pesaro Maxi**

Requiring minimal installation Pesaro Maxi enables greater flexibility in supermarket applications. With an ultra-thin design, invisible gap Pesaro Maxi can be surface mounted, suspended or recessed to walls and ceilings.



# Fresh Produce Lighting

Typically found near the entrance of supermarkets, the fresh produce area should be designed to exude a sense of freshness and entice customers to purchase a variety of fresh produce. Our innovative 'Brilliant Vivid' LED technology enhances the presentation of the produce by enriching its natural colours, ensuring that the saturation and hues are consistent with daylight. This cutting-edge technology allows a broader spectrum of colours and contrasts to be represented, enabling customers to perceive the texture and finer details of the products more clearly. As a result, they can quickly discern the freshness of the produce.

Effective Fresh Produce Lighting Product Options:

**MONDO LUX™**



**Hartley HE**

A highly efficient spotlight that leads the way in sustainable lighting. Delivering class-leading system efficacy 160lm/W\* and premium light quality. This compact spotlight uses specially designed laser-cut reflectors, an integral driver and leading innovation, high efficiency COB LED, Hartley HE is considered and minimal. The head has a rotation angle up to 350°, which combined with a VIVID LED chip can illuminate fresh produce beautifully. An ideal, economical supermarket solution. \*Tested at 19W & 4000K with a spot beam angle.



**Cosmos**

Featuring a double asymmetric lens, is an excellent choice for aisle lighting. This lighting solution is easy to install and maintain, resulting in lower installation costs. Additionally, the system creates the perfect effect on aisle stock from top to bottom, ensuring effective illumination.

Enhance the presentation of produce by enriching its natural colours.



**Standard LED**

3000K CRI90

No highlights or shine. Reds, blues and greens are not accurately presented. White appears yellowish. Desaturates colours.



**Brilliant VIVID LED**

3000K CRI97

Brilliant VIVID LED can create beautiful, saturated colours which represent a full range of fine colour gradation in comparison with standard LED.





# Delicatessen Lighting

The lighting design for the delicatessen area looks to ensure meats, cheese and cooked goods are well presented but also considers the temperature impact of goods. The primary goal of the delicatessen area is to showcase the meat's natural appearance, not to provide high levels of illumination. Overly bright lighting can cause the meat to lose its red colour, become discoloured, and lose its freshness. Therefore, it is crucial to strike a balance in the lighting design that will properly highlight the meat's texture and appearance while maintaining its freshness.



The objective is to ensure that meats, cheese, and cooked goods are well presented while also considering the temperature impact.

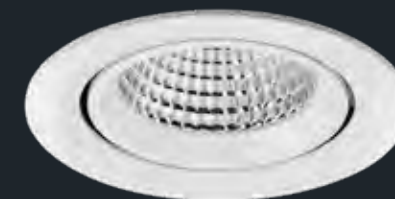
IGA Burpengary  
Burpengary, Queensland



IGA Burpengary  
Burpengary, Queensland

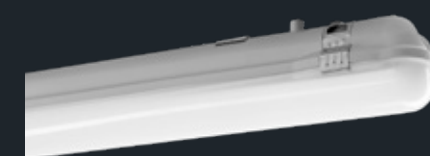
Effective Delicatessen  
Lighting Product Options:

**MONDO LUX™**



| **Siena**

Available in four sizes (Tiny, Mini, Midi and Maxi), the Siena Downlight has excellent heat management with die cast aluminium housing and supports both natural white and warmer optics. This downlight is the ideal choice for Delicatessen Lighting when specified with a narrow beam angle.



| **T-Bar Lumo**

Available in four product variants: 1195mm x 595mm, 595mm x 595mm, 1195mm x 295mm and Micro Prismatic 1195mm x 295mm Diffused. The T-Bar Lumo Panel features high-quality LED lights that emit a bright, crisp light that is ideal for highlighting products and creating a warm, inviting atmosphere for customers.





IGA Burpengary  
Burpengary, Queensland

## Point of Sale Area Lighting

The point-of-sale area should be bright, and comfortable for employees and customers. Low-glare and high lumen output LED light fittings allow employees and customers to see the goods and cash register without harsh discomfort glare. We place a major focus on this area being well lit, to not only provide a good experience for the staff and customers but to emphasize impulse buying opportunities as the customer is getting ready to leave the store.

IGA Woodend  
Woodend, Victoria

Effective Point of Sale  
Lighting Product Options:



### | Hartley HE

A highly efficient spotlight that leads the way in sustainable lighting. Delivering class-leading system efficacy 160lm/W\* and premium light quality. This compact spotlight uses specially designed laser-cut reflectors, an integral driver and leading innovation, high efficiency COB LED, Hartley HE is considered and minimal. The head has a rotation angle up to 350°, which can provide directional lighting and flexibility in the point-of-sale area beautifully. An ideal, economical supermarket solution. \*Tested at 19W & 4000K with a spot beam angle.



### | Esen Eco

Our modularly designed downlight, Esen Eco offers impressive glare control. Its deep design provides the perfect balance of light output and reduced glare, delivering a comfortable visual experience. The improved aluminium heatsink ensures ideal thermal management for maximum performance. Esen Eco offers great value for supermarket directional lighting applications.

**MONDO LUX™**



### | Cosmos

For general lighting within the point-of-sale area Cosmos High Bays are an ideal solution due to their ability to provide uniform and bright lighting over a large area. These types of fixtures are typically suspended at a height of 6m or more and are designed to illuminate spaces with high ceilings. Made with die-cast aluminum alloy housing in black powder-coat, Cosmos comes with IP65 and IK08 rating. High bay fittings are also energy-efficient and have a longer lifespan compared to traditional lighting solutions, making them a cost-effective option for supermarkets.





IGA Georges Hall,  
Georges Hall, New South Wales



## Back of House, Storage & Food Preparation Lighting

Although customers may not have access to the storage and food preparation areas, these spaces are crucial for staff to carry out required tasks. Therefore, the priority is given to practicality and ensuring a safe and efficient work environment, rather than focusing on the aesthetic appeal of the lighting used. It is also important to ensure that the lighting design complies with the regulations set by the Building Code of Australia.



Tugan Market Co  
Currumbin, Queensland

## Promotional Area & Aisle End Lighting

The promotional area is usually featured at the end bay of aisles or in a dedicated position within the supermarket. Lighting for this area needs to be targeted, to better attract customers at first glance and draw them to the promotion special buys/products and discounts. Lighting for this area should be brighter than the surrounding environment to attract attention.

Effective Promo Area & Aisle  
End Lighting Product Options:



### | Hartley HE

A highly efficient spotlight that leads the way in sustainable lighting. Delivering class-leading system efficacy 160lm/W\* and premium light quality. This compact spotlight uses specially designed laser-cut reflectors, an integral driver and leading innovation, high efficiency COB LED, Hartley HE is considered and minimal. The head has a rotation angle up to 350°, which can provide directional lighting and flexibility in the point-of-sale area beautifully. An ideal, economical supermarket solution. \*Tested at 19W & 4000K with a spot beam angle.

Effective Back of House, Storage and Food  
Preparation Lighting Product Options:



### | Gela Batten

Used to provide effective overhead lighting in storage areas, the Gela Batten can be easily installed onto the ceiling or walls as required. IP66 rated with Tri-proof protection from dust, corrosion, and moisture Gela is popular for these areas because they are easy to clean, sealed, energy efficient and provide a bright and even light distribution.



### | Esen Eco

Our modularly designed downlight, Esen Eco offers impressive glare control. Its deep design provides the perfect balance of light output and reduced glare, delivering a comfortable visual experience. The improved aluminium heatsink ensures ideal thermal management for maximum performance. Esen Eco offers great value for general lighting supermarket applications.



### | T-Bar Lumo

Available in four product variants: 1195mm x 595mm, 595mm x 595mm, 1195mm x 295mm and Micro Prismatic 1195mm x 295mm the T-Bar Lumo Panel is a great choice for lighting in storage and food preparation areas due to its ability to provide bright and even light distribution. Easy to install onto ceilings or walls the T-Bar Lumo panel has a sleek and modern appearance and is highly efficient >100lm/W on average making it a preferred option for back-of-house lighting.

**MONDOLUX™**



# Liquor Lighting

When designing lighting for the liquor area, it's important to consider factors such as sufficient brightness, appropriate colour temperature, the use of accent lighting, and energy efficiency. Brightness should be adequate to allow customers to see products but not overly harsh. Warmer colour temperatures can create a relaxing and inviting atmosphere while still providing even illumination. Accent lighting can highlight specific items or hero sections of the display. By considering these factors, lighting can be designed to enhance the visual appeal of the liquor area while creating a comfortable environment for customers.



IGA Mansfield  
Mansfield, Victoria



Effective Liquor Lighting  
Product Options:

**MONDOLUX™**



## Hartley HE

A highly efficient spotlight that leads the way in sustainable lighting. Delivering class-leading system efficacy 160lm/W\* and premium light quality. This compact spotlight uses specially designed laser-cut reflectors, an integral driver and leading innovation, high efficiency COB LED, Hartley HE is considered an ideal and minimal. The head has a rotation angle up to 350°, which can provide directional lighting and flexibility in the point-of-sale area beautifully. An ideal, economical supermarket solution. \*Tested at 19W & 4000K with a spot beam angle.









[aglo.com.au](http://aglo.com.au)

**Melbourne Head Office**

10 Plane Tree Ave  
Dingley Village, VIC 3172  
1300 601 931  
[sales@aglo.com.au](mailto:sales@aglo.com.au)

**Queensland Office**

Unit 6 / 94 Township Drive  
Burleigh Heads, QLD 4220  
07 5594 6968  
[sales.qld@aglo.com.au](mailto:sales.qld@aglo.com.au)

Aglo distributes Mondolux Lighting

**MONDOLUX**<sup>TM</sup>

[mondolux.com.au](http://mondolux.com.au)

