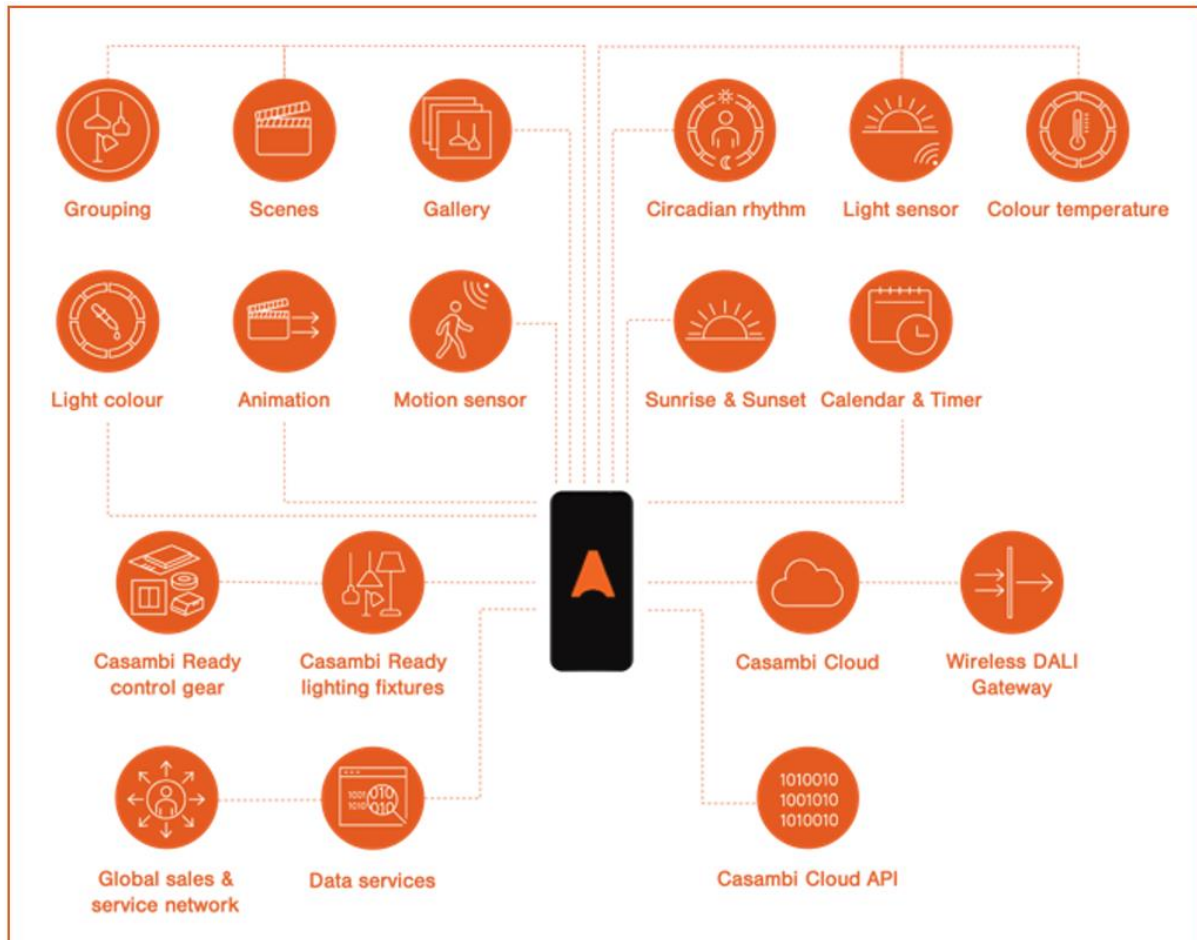




CASAMBI

# BASIC APP USER MANUAL

James Joudi  
AGLO SYSTEMS



Casambi is an advanced lighting control solution based on Bluetooth Low Energy (BLE). Bluetooth Low Energy is the only low power wireless technology in all modern smartphones, tablets, and even smart watches, making it the only mainstream and future proof low power radio technology in the world. Casambi technology can be integrated into fixtures, LED-drivers, LED-modules, switches, sensors, and different kinds of control modules creating an optimal solution in terms of easy installation and functionality with minimal additional hardware and deployment costs. Casambi-ready products, that are produced by Casambi partners and are 100% compatible with Casambi's native products.

Casambi technology provides a mesh network where all the intelligence of the system is replicated in every node, so that it creates a system with no single points of failure.

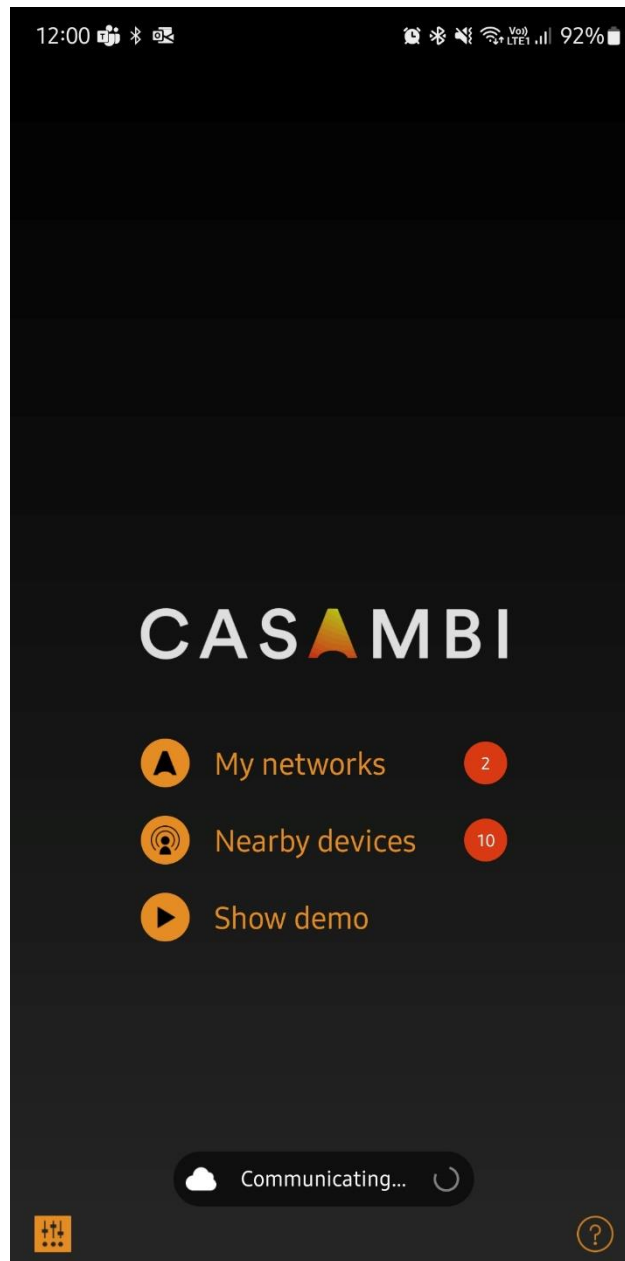
The Casambi app works as one of the user interfaces in a Casambi lighting control solution: as the commissioning tool as well as a remote gateway. The Casambi app works with iOS as well as Android devices, like smartphones, tablets, and smartwatches. The Casambi app is free to download from Google Play and Apple App Store.

## Contents

Login to the Network .....	3
Luminaires tab.....	4
Basic gestures.....	5
Grouping .....	5
Using a group .....	6
Editing luminaire control properties.....	6
Scenes tab .....	8
Types of scene.....	9
Creating a basic scene.....	9

## Login to the Network

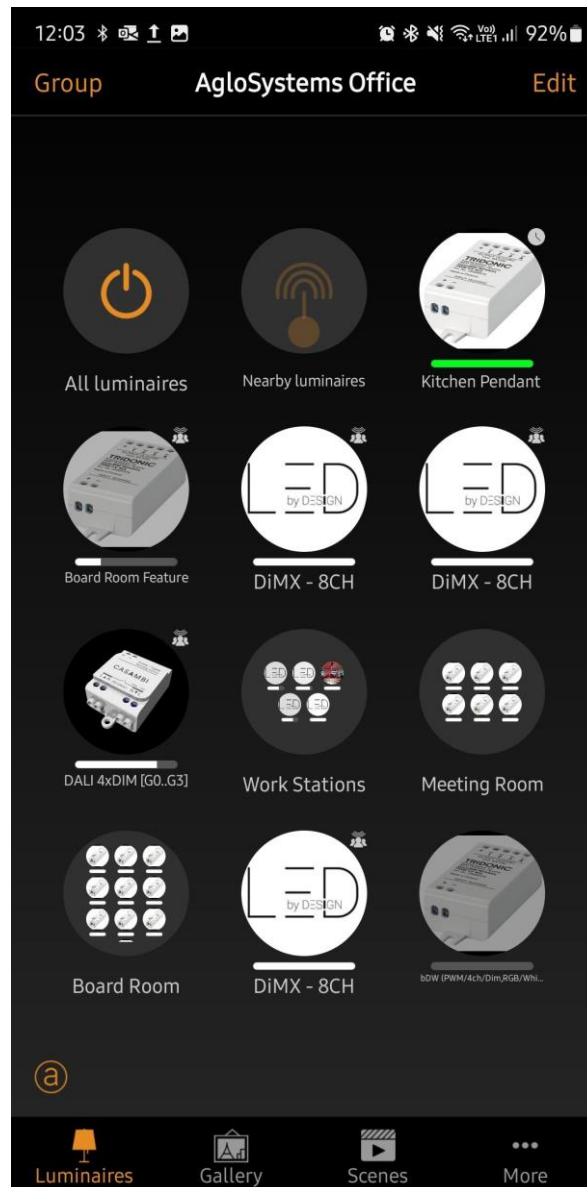
After you have finished installing the app, you will need to log in to the network. Aglo Systems, will set up and pre-commission the network for you, and will give you the password to access it. Once you have successfully logged in, the app will direct you to the Luminaire tab.



## Luminaires tab

Luminaires that are paired to your network will be displayed in the Luminaires tab. Each will have an icon picture and name. Luminaires that are online (i.e. powered) will also show a bar indicating the current brightness level and light colour.

Luminaire or Group icons shown in the Luminaires tab can be rearranged by pushing Edit, selecting and holding the icon, then dragging it to a different position. Release the icon in its new position. Push Done when finished.

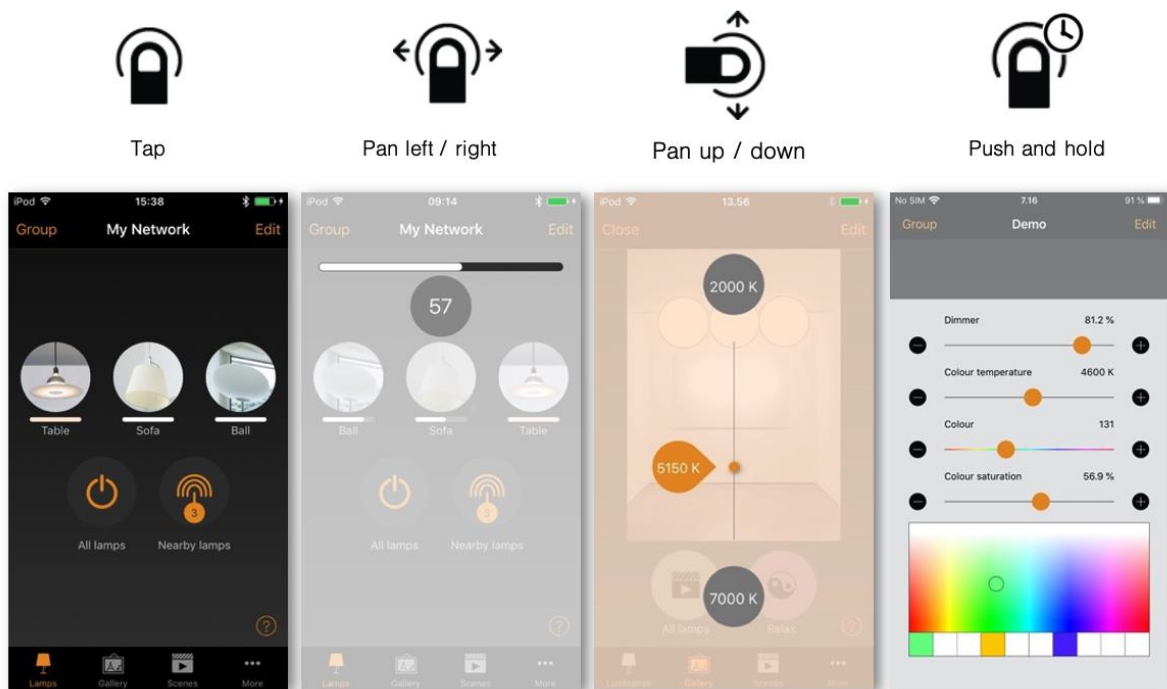


## Basic gestures

The basic gestures used to control the luminaires are:

- Tap the luminaire icon to turn the luminaire on or off.
- Pan left or right on the luminaire icon adjust the luminaire light level. The app remembers the set level so, if you turn on the luminaire off and on again using the tap gesture, it will return to that level.
- Pan up or down on the luminaire icon to adjust the colour temperature of a tuneable white luminaire.
- Push and hold the luminaire icon to open the main adjustable parameters.
  - For colour changing luminaires you can set the desired colour. It is possible to save your favourite colours to the palette. Set the colour and then select and hold an empty palette space to save it. The colour palette cannot be reset but saved colours can be over-written with new colours.
  - If your luminaire supports more than one channel, you can adjust the channels separately.

Tip: Use the same gestures on the All luminaires icon to control all of your luminaires simultaneously or use the Nearby luminaires icon to only control those devices within range of your mobile device.



## Grouping

Grouping is a method of organizing luminaire icons in the Luminaires tab. Grouping can also be referred to as zoning. This can make it easier to find the correct luminaires later (especially if you have a large network). Groups can be considered as physical collections of luminaires in an area (e.g. all luminaires in a row or in one room). One luminaire can only be part of one group. You can name groups and set common dimming levels, colour or colour temperature for all luminaires in a group.

Groups are predominantly intended for manual control, whereas scenes are designed primarily for automation.

### Creating and editing a group

There are two ways to create a group:

1. Select **Group** (top left of the screen). Select the luminaires for the group by tapping them. The **+ / -** icons (top right) can be used to select or deselect all luminaires that are not already in another group. Create the group by tapping the folder icon. Name the group. Tap **Add a new group**. Tap **Done** to save the changes.
2. Select **Edit** at the top of the screen. Drag individual luminaire icons on top of each other to create a group. Double tap on the group to open it. Tap on the Group name to rename it. Tap **Done** to save the changes.

To add more luminaires into a group, select **Edit** and then drag and drop luminaire icons into the relevant group.

If you want to edit a group, select **Edit** and then the group to open it for editing. You can rename the group or remove luminaires by dragging and dropping them outside the group area. When you have finished editing the group, select **Done** and **Close**.

If you want to remove a group, select **Edit** or **Group** and then select the “X” in the corner of the group icon. This will remove the group and the luminaires will appear again as individual devices in the Luminaires tab.

### Using a group

You can control all luminaires in a group simultaneously using the same basic app gestures on the relevant group icon. You can also still control individual luminaires separately, even if they are part of a group. Double tap the group to open it. You can then use the basic gestures on individual luminaires.

### Editing luminaire control properties

To edit individual luminaire control properties, double tap the luminaire icon you want to edit or tap **Edit** at the top of the screen and select the luminaire to edit. A separate window then shows the configurable properties. Note that the available options list may vary depending on the used Casambi enable device.

**INFORMATION** Within this section you can change the luminaire’s name and create a new icon which replaces the luminaire’s default image. The icon can be an existing picture from your device’s photo gallery, or you can take a new photo. The Details section also displays further technical information about the luminaire.

**STATE** Here you can open the luminaire main adjustable parameters view.

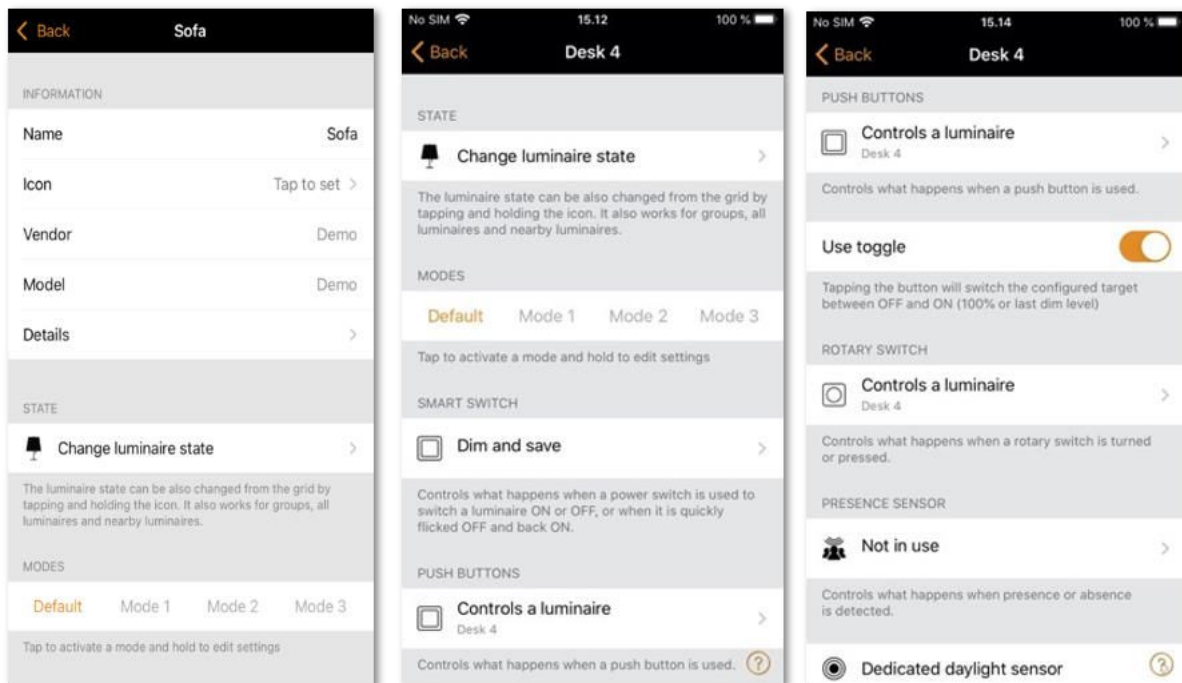
**MODES** Modes can be used to store different dimming levels, colours or colour temperatures that can be recalled using Switches or the Smart Switching option. To edit a mode, select and hold the Default or Mode ‘X’ (1-3) text and Edit/Cancel options will appear. Select Edit and adjust the luminaire settings as needed. The mode is automatically saved after exiting the view (tap outside the window to close it). Default can be used to set the desired luminaire start up state after a power cut.

If you wish to clear a set mode, select and hold the desired Mode 'X' and Edit/Clear/Cancel options will appear. Select Clear to deactivate the mode. Note that the Default mode cannot be cleared.

**SMART SWITCH** Allows you to define functionality that occurs if the luminaire's power is turned off/on. It is a method of achieving simple lighting control. Note that the smart switch option is only available on certain Casambi enabled devices. For detailed information about smart switching please see the Smart Switching section in the Appendix.

**PUSH BUTTONS** and **ROTARY SWITCH** Allows you to select the function of a luminaire's inbuilt switch (if fitted), depending on the type of Casambi device which is being used. For detailed information push buttons please see the Push Buttons sections in the Appendix.

**Use toggle** This option is only displayed if the luminaire has a push button. It allows the button to toggle the command on and off each time the button is pressed. If disabled the push button will only activate the assigned push button function.



**PRESENCE SENSOR** Allows you to select the function of a luminaire's inbuilt sensor (if fitted).

**Dedicated daylight sensor** This option allows you to select a daylight sensor which can affect the luminaire. You can also adjust the Daylight gain for this luminaire using the slider.

**Daylight gain** This allows you to specify how much natural light can be available in an area covered by the specific luminaire. For example, a luminaire by a window may have a daylight gain of 100%, but a luminaire in a darker area of a room may have a lower value. This feature may be used, for example, if you have just one lux sensor controlling multiple luminaires in an area but want to try to maintain a more even illumination rather than having some areas darker than others. More information can be found in the Appendix under daylight gain.

**STARTUP STATE FOR POWER ON** Allows you to set the luminaire to use either the Default mode (default light level) or Last state when switching on the luminaire. The Last state option will cause a luminaire to go to the same dimming level and colour which were previously in use before the

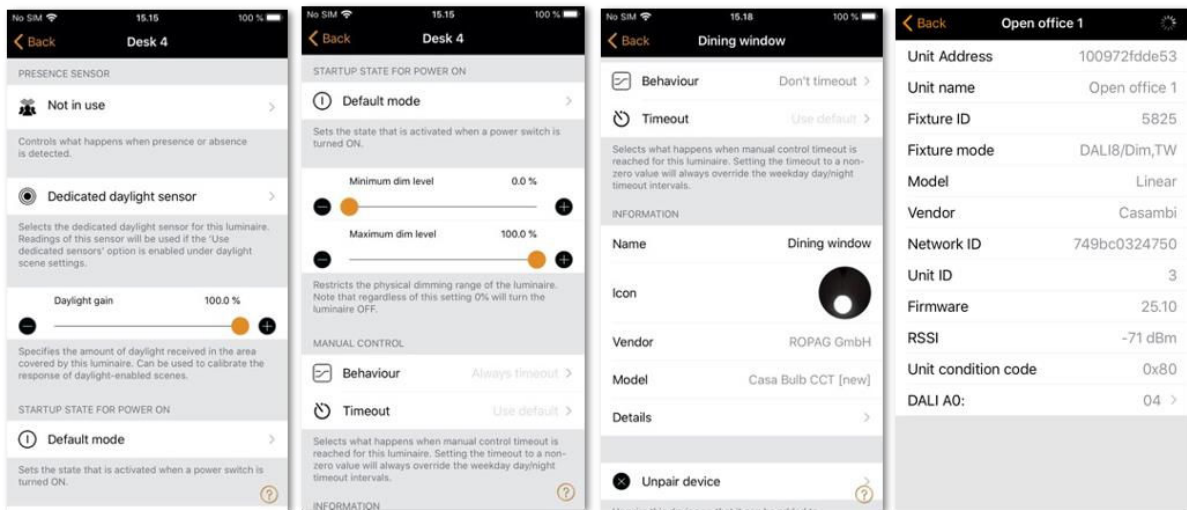


luminaire was switched off. Note that if the Last state option is selected and the luminaire was OFF when power was switched off, then the luminaire will stay off when power is reapplied. If you wish to prevent this you can set a minimum dimmed level for the last state so that the luminaire will always illuminate at that minimum level even if its last state was actually OFF.

Minimum dim level and Maximum dim level You can also configure minimum and maximum dimming levels for the luminaire. The luminaire will always operate within these restrictions, although dimming to 0% will always turn off the luminaire.

MANUAL CONTROL The Behaviour and Timeout options allow you to over-ride the network's default manual control settings and create individual options for an individual luminaire. Select Behaviour to change how manual control should work for the luminaire and select Timeout to over-ride the default timeout value. Note that the Manual Control option will only appear if Use control hierarchy has been enabled in the Control options section of the network settings.

Unpair device / Replace device Use the Unpair device option to remove a luminaire from a network. If a luminaire has become damaged and is powered off, the Replace device option can then be used to replace a luminaire. When using the Replace device option, an identical luminaire device must be used. This allows all of the previous settings for the luminaire to be used by the new luminaire device.



## Scenes tab

Scenes allow you to create and recall lighting situations. A scene can control any variation of luminaires in the network. Luminaires can be used in multiple scenes.

Up to 255 scenes can be created.

Scenes never activate by themselves. They must always have something activate them.

- Manually: For example, by pushing a Casambi enabled button/switch, or by physically selecting the scene icon in the app.
- Sensor: For example, configuring a sensor to activate a scene when movement is detected.
- Timer: For example, setting a timer to switch lights on at a certain time of day.

A scene is active when its icon is highlighted.

## Types of scene

There are three types of “scene” that can be created in the Casambi app. Which to use will depend on what you are trying to achieve.

Note: Basic scenes must first be created before animations or time-based scenes can be used correctly.

Scene This is a single lighting scenario (usually containing a number of luminaires adjusted to different dimmed levels and/or colours) that you wish to be able to recall. Basic scenes can also be configured as Circadian scenes (so that tuneable white luminaires will automatically adjust according to a defined profile graph for as long as the scene is active), or a Daylight scene (which adjusts the luminaires in the scene according to the amount of light measured by a lux sensor).

Animation scene Consists of at least one basic scene. When the Animation scene is active, the basic scenes are automatically stepped through one after the other to create a sequence of lighting changes (for example a Red, Green, Blue colour changing sequence, or one scene that is set to dim to different levels).

Time based scene Consists of at least two “conditions” with different scenes or scene dimmed levels for each. Depending on when the Time based scene is activated, the relevant lighting scene condition for that time will be actioned.

## Creating a basic scene

Select Edit and + then enter a name for the scene and select Add a scene. The scene edit view will open where you can select and adjust the luminaires to be included in the scene.

Select luminaires individually, or use None, Invert or All to remove all luminaires from the scene, change any active luminaires to inactive & visa-versa, or add all network luminaires to the scene. Use + or - to add or remove all individually visible luminaires, but not luminaires within groups

To add group luminaires to a scene, double tap the group and select the luminaires. Add or remove all group luminaires by tapping + or -. Adjust selected group luminaires using basic gestures anywhere in the group area.

Luminaires can also be added to a scene from a gallery image. Select the Gallery tab, open the appropriate gallery image and select the required luminaire(s).

You can adjust the luminaires separately using the basic gestures, or you can use the Luminaires in scene control icon to adjust all of the luminaires in the scene.

To change the name, image and colour for the scene, select Settings at the bottom of the screen. You can then rename the scene, use the colour palette to define a colour for the scene icon, and choose an icon for the scene. A scene can be hidden from the user view by selecting Hidden. To return to the scenes tab, select Done.

Add more scenes using the + at the top of the scenes tab. Copy scenes by pushing and holding an existing scene. A copy is created in edit mode with an additional number added to the original scene name. You can rename this scene from the scene Settings.

Tip: Remember to include luminaires which must remain off in a scene and adjust them to 0 % dimmed level.



For full user guide please contact Aglo Systems.

Casambi@aglosystems.com.au