



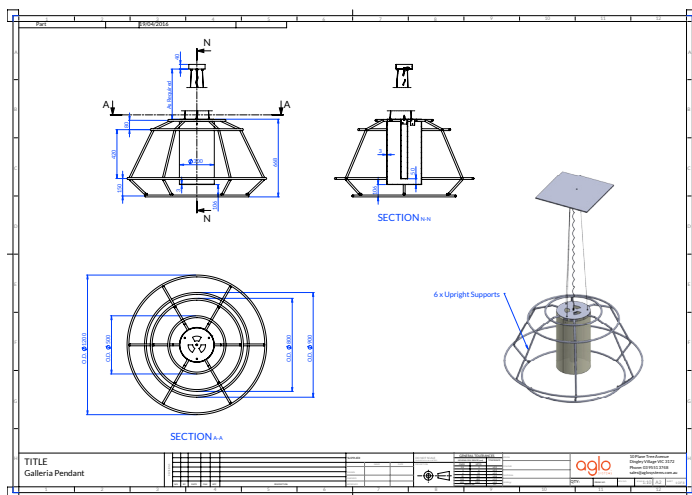
CUSTOM  
DESIGN AND  
MANUFACTURE

## Rope Feature Light Fittings

Galleria Shopping Plaza Food Court Bourke St, Melbourne CBD



*Continually improving  
your lighting experience*



## Opportunity

The Galleria Shopping Plaza is located on Bourke Street in the heart of the Melbourne CBD. For the food court redevelopment, Aglo Systems was called on to fabricate these bespoke light fitting features.

## Solution

Working in conjunction with Electrolight and Michelle Taylor Retail Design Concepts, Aglo Systems' Custom Design department developed and manufactured two variations of luminaires. The first was a 3.4m tall floor standing lamp with a 2m black steel tripod base. Atop sat a rope clad, 1.4m high frustoconical decorative shade. The second was a .65m high pendant featuring a compressed version of the same shade.

A rope theme flowed through the interior design of the food court and was integrated into the concept for the luminaire design. To create the shade, 10mm nylon rope in cyan and white colouring was tightly wrapped around the powdercoated frame. The solution involved some tweaking and fine-tuning to hide the rope joints and knots. The light source was LED within a 300mm acrylic diffuser.

Three floor standing light fittings and six pendants were manufactured in total and provide elegant visual features for the food court.

