



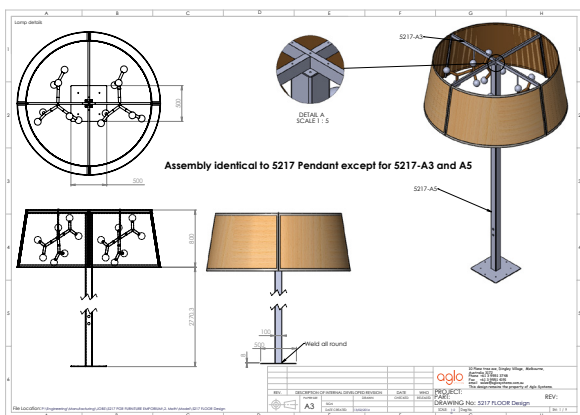
CUSTOM
DESIGN AND
MANUFACTURE

Pendant Shades

Emporium Food Court Lonsdale St, Melbourne CBD



*Continually improving
your lighting experience*



On site installation of pendant shades



Suspended version



Pole mounted version

Scope

Aglo Systems was approached by Novion Property Group, (then named Colonial First Estate Asset Management) to investigate the costing, timing and method of fabrication to achieve a challenging design intent for their newest Melbourne retail centre.

Constraints

The design solution needed to incorporate and address the following:

- A cost effective design.
- An existing lighting element from lighting designer Christopher Boots – the BCAA pendant.
- A large tapered drum profile approx. 2m x 0.8m.
- A flat pack design to allow for assembly around existing columns.
- Non visible fixings.
- Specific materials – stainless mirror, timber veneer and bronze finish to interior for added depth.

The flat pack profile was engineered in CAD to allow for the flat pattern to achieve a tapered profile.

Supplied Concept

The initial concept was supplied to Aglo Systems by Russell & George Architects as part of the brief.

Prototype design and development process

All prototypes were designed and developed on 3D CAD software – Solidworks for fit, form and functionality. A concept 3D model was generated and presented to the client for preliminary review.

Following the client's feedback, further design iterations were generated and 2D drawings produced for prototype manufacture.

A first generation prototype was fabricated to evaluate the timber veneer and lighting impact. It was found that the timber veneer was unstable and expanded considerably when formed into shape. This caused cracking during cooler temperatures. The issue was cleverly resolved by using a screen printed image of the veneer instead.

A second generation prototype followed to evaluate the flat pack design requirements and on site assembly. It was perfect first time!

The final result involved a variety of production techniques, including CNC profile cutting of the bronze substrate, laser cutting, screen printing and mirror polishing.

A complete set of technical drawings were compiled for manufacture and the full production run was kicked off after the client signed off on the prototypes.