



PROJECT
LIGHTING
SOLUTIONS

Multi Residential Development Lighting

Eminence Apartments Carlton, VIC



*Continually improving
your lighting experience*



Opportunity

The Eminence offers luxury 1, 2 and 3 bedroom apartments in a 15 story high-rise building situated in Carlton, Melbourne.

Aglo Systems worked with both Crema Constructions and Acton Electrical to deliver this project.

Solution

Aglo were initially approached by the awarded electrical contractor as we were specified for a custom light fitting. Subsequently, our team was able to provide an alternative lighting package for the entire development. This provided significant cost savings to our customer while supplying quality light fittings.

We assisted Acton Electrical through the entire alternative specification process, providing fitting samples for approval, Dialux reports and lighting design recommendations to provide further cost reductions. Through reviewing the lighting design, we recommended using a lower wattage downlight for the apartments and corridors which provided the required light levels, whilst reducing the overall power consumption per square metre.

Aglo sourced and supplied various high quality light fittings which were installed throughout the residential and common areas, stairways and carpark. The general lighting concept involved a combination of 3000K recessed LED downlights and tubular, matte black, surface mounted downlights. To carry on the theme and match these surface mounted downlights, Aglo's Custom Manufacture and Design department produced up/down wall lights specifically for the external balconies. In the apartment living rooms, LED strip lighting was used in the ceiling bulkheads for indirect ambient illumination and on the kitchen splash backs for task lighting.

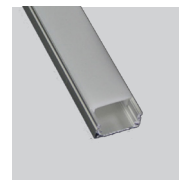
LED inground and step lights were provided for the rooftop terrace, which overlooks stunning Melbourne city views. Aglo also provided all illuminated emergency lighting and weatherproof / vandal proof battens.

The Eminence project was completed from start to finish within one year and Aglo was able to meet all the required deadlines. The delivery schedule of the light fittings was staggered by floor stage to suit our customer's schedule.

Products Used



Stirling Fixed



Stealth-3



Extro 120LED